

Impact of Oscillatory Movement on Insulation Reliability of Cables Supplying Offshore Platforms



Research Team

Researchers:

Dr Christopher Emersic

Miss Frances Hu

Supervisors:

Dr Tony Chen

Prof Simon Rowland

WP1: Small-scale Characterisation

UoM

WP2: Large-scale Trial

UoM

ORE Catapult

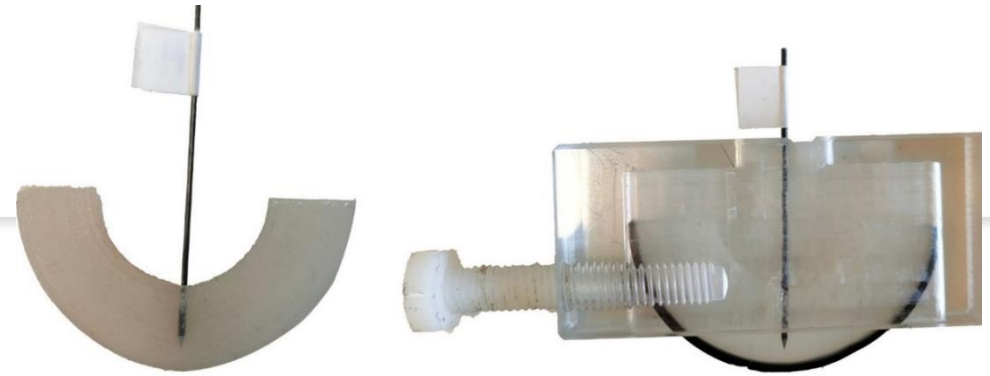
JDR Cables

WP3: Project & Impact Management

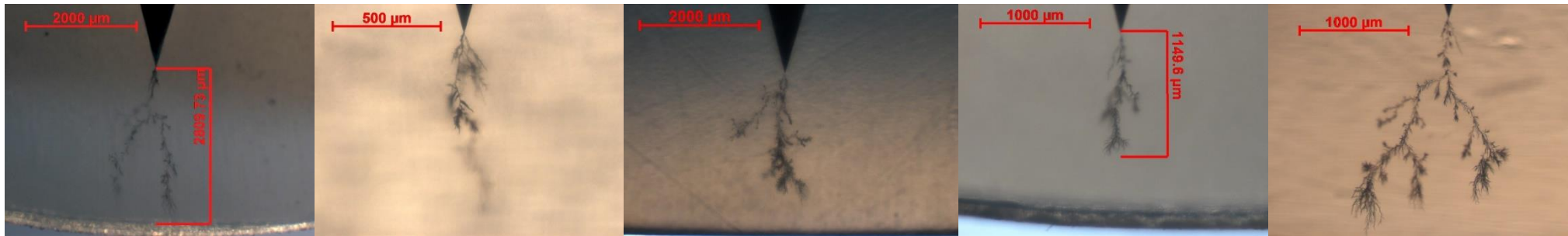
Industry Steering Committee:
ORE Catapult, JDR Cables,
Supergen ORE Hub

Electrical Treeing

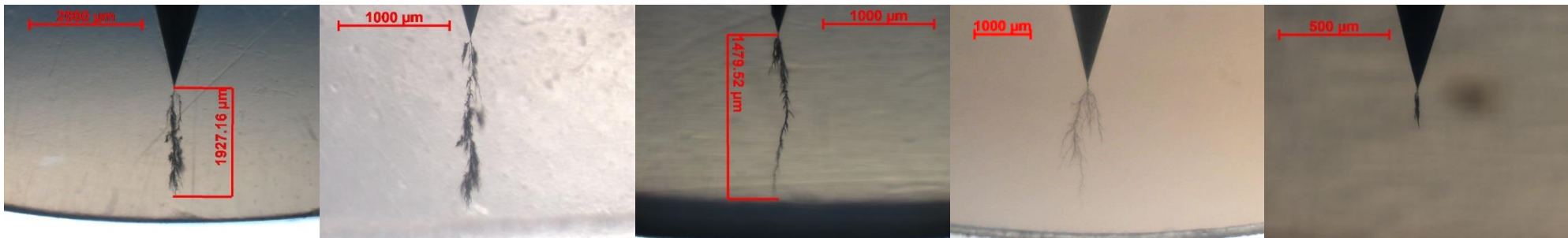
- Trees grown with unstrained and strained (10% overall strain applied) samples (up to ~5% gap-region strain from initial modelling)



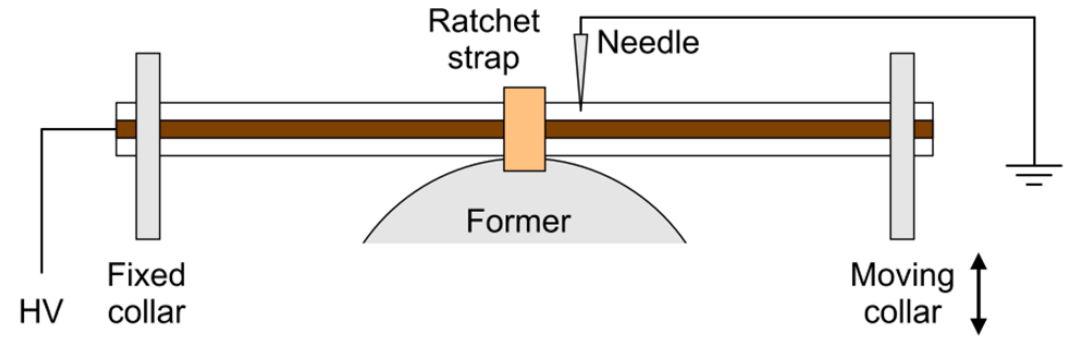
Unstrained



10% overall strain applied



Large-scale Testing
in ORE Catapult



Side view of test rig



Front view of test rig