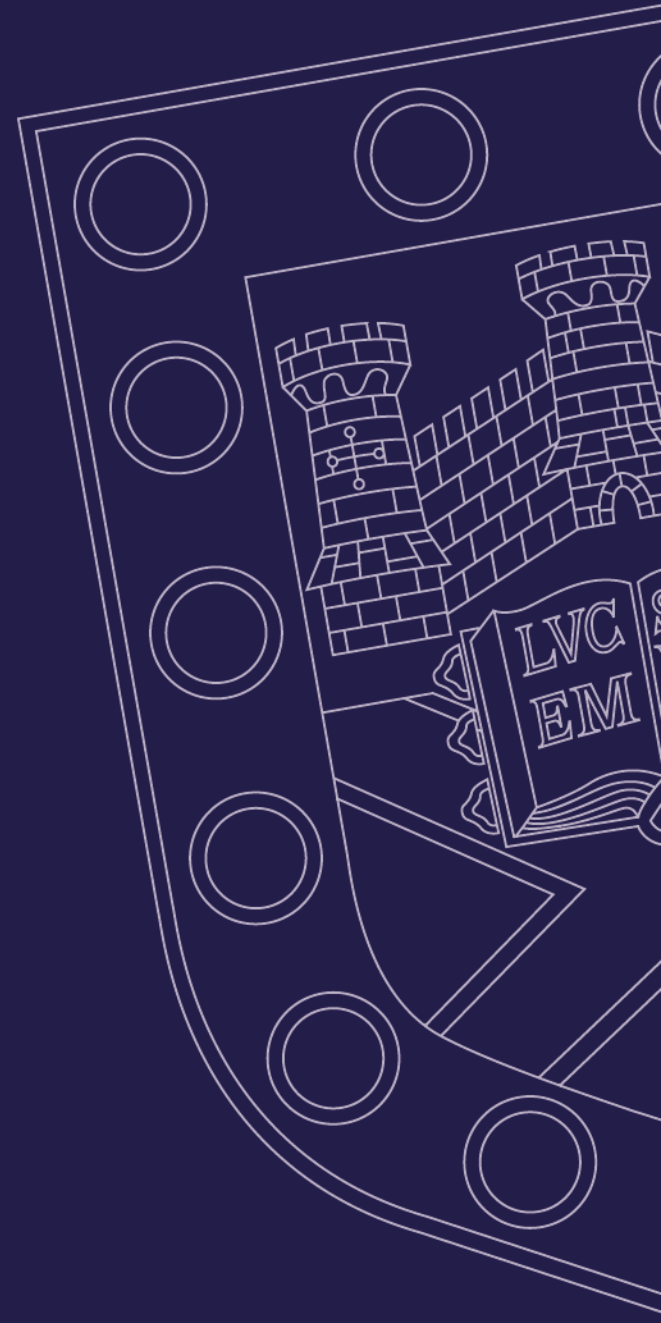


WP4: Dynamic Subsea Power Cables: *Modelling & Testing*

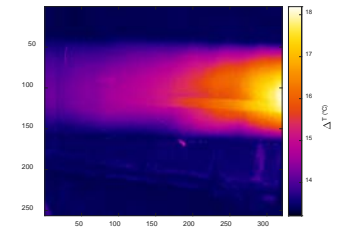
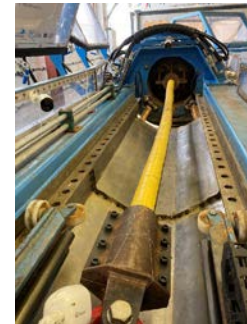
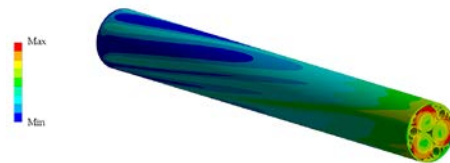
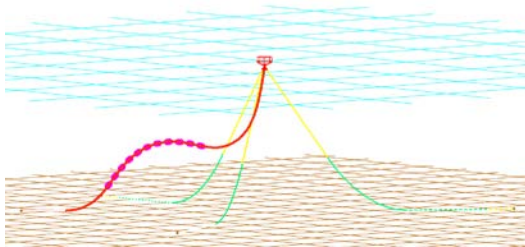


Prof Philipp Thies, Dr Rachel Nicholls-Lee
Renewable Energy Group, University of Exeter



Introduction

- Key challenges for dynamic subsea power cables:
 - Understanding structural response
 - Understanding and quantification of failure modes, especially fatigue
- Progress:
 - Further work on coupled numerical model: governing design parameter sensitivity study
 - Initial non-destructive examination techniques: assessment and testing



Numerical Model

Physical testing

